

## Test Report

No. CANEC1708840401

Date: 23 May 2017

Page 1 of 5

SHENZHEN GLIDA ELECTRONICS CO.,LTD

BUILDING C,HUANYU INDUSTRIAL ZONE,XUEZI ROAD,BAO`AN DISTRICT SHENZHEN CITY,CHINA

The following sample(s) was/were submitted and identified on behalf of the clients as : Li-ion  
18650 2200mAh

SGS Job No. : CP17-025881 - SZ

Model No. : Li-ion 18650 2200mAh

Client Ref. Info. : Applicant declares, the materials and weight percentage of below models are exactly same as the tested model:32650 series, 32600 series, 26650 series, 26500 series, 26350 series, 22500 series, 22650 series, 22430 series, 22340 series, 18650 series, 18500 series,18490 series, 18620 series, 16340 series, 16310 series, 18350 series,17340 series,15270 series, 14650 series, 14500 series, 14400 series, 14430 series, 14340 series, 14280 series,14250 series, 14200 series, 10430 series, 10440 series, 10180 series,16650 series, 16500 series, 17500 series,16280 series, 13650 series, 13620 series,13500 series, 13450 series, 804260 series, 052030 series, 502020 series,402030 series, 10150 series, 08350 series

Date of Sample Received : 16 May 2017

Testing Period : 16 May 2017 - 22 May 2017

Test Requested : Selected test(s) as requested by client.

Test Method : Please refer to next page(s).

Test Results : Please refer to next page(s).

Conclusion : The submitted battery sample does not exceed the limit mentioned in Directive 2006/66/EC and its Article 4 amendment of Directive 2013/56/EU.



## Test Report

No. CANEC1708840401

Date: 23 May 2017

Page 2 of 5

Signed for and on behalf of  
SGS-CSTC Standards Technical Services Co., Ltd. Guangzhou Branch

*violet*

Violet, Shi  
Approved Signatory



# Test Report

No. CANEC1708840401

Date: 23 May 2017

Page 3 of 5

Test Results :

Test Part Description :

Specimen No.	SGS Sample ID	Description
SN1	CAN17-088404.001	"Li-ion 18650 2200mAh"

Remarks :

- (1) 1 mg/kg = 1 ppm = 0.0001%
- (2) MDL = Method Detection Limit
- (3) ND = Not Detected ( < MDL )
- (4) "-" = Not Regulated

**Directive 2006/66/EC and its Article 4 amendment of Directive 2013/56/EU– Heavy Metals Content in Batteries and Accumulators**

Test Method : Acid digestion method, analysis was performed by ICP-OES.

<u>Test Item(s)</u>	<u>Limit</u>	<u>Unit</u>	<u>MDL</u>	<u>001</u>
Cadmium (Cd)	0.0020	%(w/w)	0.0010	ND
Lead (Pb)	-	%(w/w)	0.0010	ND
Mercury (Hg)	0.0005	%(w/w)	0.0001	ND

Notes :

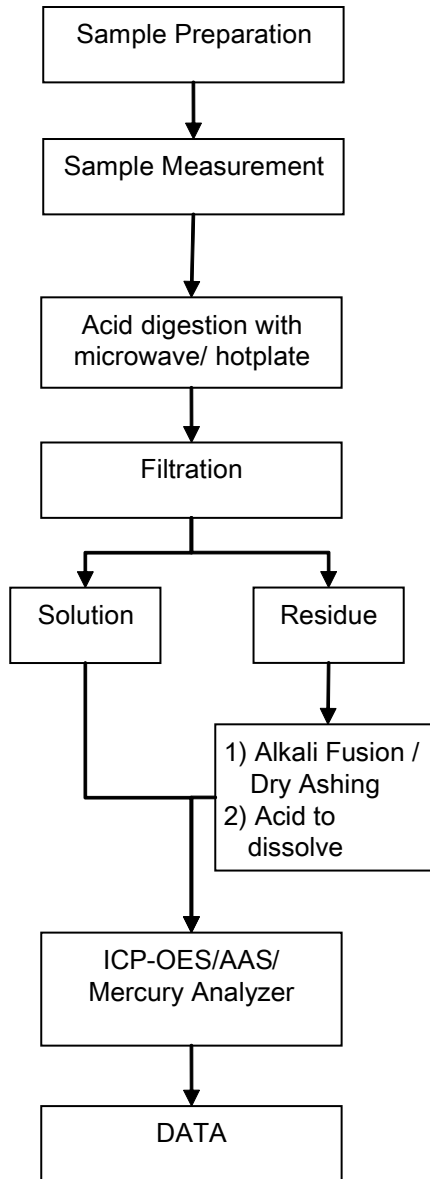
- (1) Results shown are of total weight of the battery sample.
- (2) According to the directive 2006/66/EC and its Article 4 amendment of Directive 2013/56/EU, all types of battery shall include the chemical symbol Lead when containing more than 0.004% of Pb.



ATTACHMENTS

Battery Testing Flow Chart

- 1) Name of the person who made testing: Hogan Lv
- 2) Name of the person in charge of testing: Lirenly Liu



Unless otherwise agreed in writing, this document is issued by the Company subject to its General Conditions of Service printed overleaf, available on request or accessible at <http://www.sgs.com/en/Terms-and-Conditions.aspx> and, for electronic format documents, subject to Terms and Conditions for Electronic Documents at <http://www.sgs.com/en/Terms-and-Conditions/Terms-e-Document.aspx>. Attention is drawn to the limitation of liability, indemnification and jurisdiction issues defined therein. Any holder of this document is advised that information contained hereon reflects the Company's findings at the time of its intervention only and within the limits of Client's instructions, if any. The Company's sole responsibility is to its Client and this document does not exonerate parties to a transaction from exercising all their rights and obligations under the transaction documents. This document cannot be reproduced except in full, without prior written approval of the Company. Any unauthorized alteration, forgery or falsification of the content or appearance of this document is unlawful and offenders may be prosecuted to the fullest extent of the law. Unless otherwise stated the results shown in this test report refer only to the sample(s) tested.

Attention: To check the authenticity of testing /inspection report & certificate, please contact us at telephone: (86-755) 8307 1443, or email: CN\_Doccheck@sgs.com

198 Kazhu Road, Sciotech Park Guangzhou Economic & Technology Development District, Guangzhou, China 510663 t (86-20) 82155555 f (86-20) 82075113 www.sgs.com.cn  
 中国·广州·经济技术开发区科学城科珠路198号 邮编: 510663 t (86-20) 82155555 f (86-20) 82075113 e sgs.china@sgs.com

Sample photo:



SGS authenticate the photo on original report only

\*\*\* End of Report \*\*\*